



BOX ALUMINIUM PANELS

BOX aluminium panels are mainly used to build accesses and create temporary platforms for heavy loads. They can be installed on different types of ground.

When placed on an underlay, BOX aluminium panels can be placed on fragile surfaces, such as interlocking paving or athletic tracks.

They allow the installation of concert stages with the use of cranes, articulated trucks and forklifts.

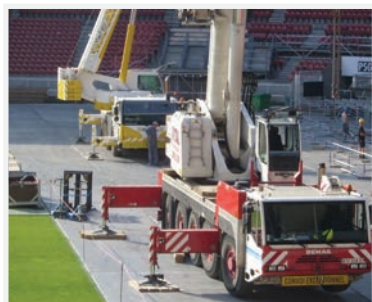


Technical specifications

- **Material:** Stretched aluminium (continuous casting)
- **Colour:** Aluminium
- **Surface:** Slightly contoured, non-slip
- **Dimensions:** 7.32 m² / panel – 2.44 m x 3.00 m x 48 mm
- **Weight:** 275 kg/panel
- **Permissible load:** 150 t/ m² depending on the type of ground
- **Transport:** 80 panels per articulated lorry, ie 585 m²
- **Accessories:** Access ramps

Properties

- BOX panels are screwed together giving them excellent stability, even when the ground is unstable.
- They can also be linked to each other by integrated brackets to create platforms.
- These panels are ideal for events, concerts and festivals as well as for construction sites, pedestrians and for all types of vehicles.



WOULD YOU LIKE MORE INFORMATION? A QUOTE OR AN ESTIMATE?



Adviser Envhyro
 +33 3 86 98 00 79
 contact@envhyro.com



website
www.envhyro.fr