



SUPATRAC

Supatrac panels are mainly used to protect very sensitive areas such as lawns, stadiums, golf courses...

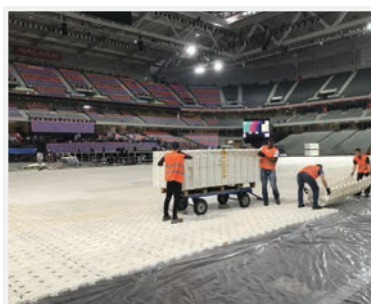
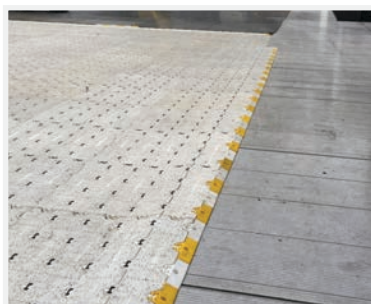
Once removed, Supatrac panels leave virtually no marks thanks to their exceptional ventilation properties !

They are usually used in front of stages for spectator access to concerts.



Technical specifications

- **Material:** Polypropylene (PP) copolymer
- **Colour:** White
- **Surface:** Non-slip
- **Dimensions:** 3.14 m²/pre-assembled panel
2,745 x 1,145 x 34 mm
- **Weight:** 32,7 kg
- **Permissible load:** 3,5 t/m² depending on the type of ground.
- **Transport :** 16 pallets of 30 panels, ie 16 x 94,20 m² =
1 507,20 m² per articulated lorry.
- **Accessoires :** Acces ramps



Properties

- Supatrac panels are quick and easily installed.
- They are connected to each other with a system of clips.
- They do not require any specific tools.

WOULD YOU LIKE MORE INFORMATION? A QUOTE OR AN ESTIMATE?



Adviser Envhyro
 +33 3 86 98 00 79
 contact@envhyro.com



Website
www.envhyro.fr