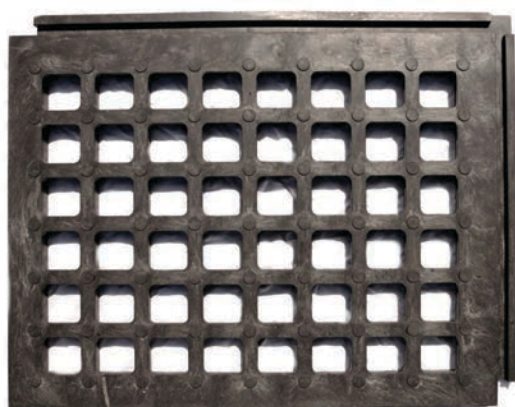




## REMOPLA (103R)

Can be filled with many types of substrata allowing the creation of mineral or vegetated surfaces.

To create parking spaces or garage entrances. To create driveways or paths.



### Technical specifications

- **Material:** Recycled PVC
- **Colour:** Anthracite Grey
- **Surface:** Non-slip profile
- **Fire classification:** Bfl-s1 (in compliance with standard NF EN13501-1+A1: 2013)
- **Usable area:** 0.42 m<sup>2</sup>/panel - 760 mm x 560 mm x 43 mm
- **Overall dimensions:** 800 mm x 600 mm x 43 mm
- **Weight:** 11 kg/panel
- **Permissible load:** 35 t/m<sup>2</sup> depending on the type of ground
- **Transport :** 60 panels / pallet, 32 pallets per trailer, ie 806 m<sup>2</sup>
- **Accessories:** Ramps.



### Properties

- Solid one-piece construction.
- Installation does not require the use of specific tools.
- Can be combined with Remopla code 102 or 103.

WOULD YOU LIKE MORE INFORMATION? A QUOTE OR AN ESTIMATE?



Tom D'AMARIO  
+33 37 89 38 51 93  
tdamario@envhyro.com



Site internet  
[www.envhyro.fr](http://www.envhyro.fr)